



**WHEN POWER & PERFORMANCE MATTERS**

**CHOOSE ACTIVE**

# AL936LE

## 12 TONNE WHEEL LOADER

### FEATURES

- ◆ Cummins 6BTA5.9-C150-II, 6 Cylinder Engine
- ◆ 2 speed transmission
- ◆ Extended Load Frame
- ◆ Integrated air conditioned and Heated Cabin
- ◆ Certified ROPS / ROPS Cabin with Pillar-less Wrap Around Windscreen & Tinted Windows
- ◆ Suspension Seat
- ◆ Single Lever Hydraulic Pilot Control
- ◆ Full Powered Third Function Hydraulics (3rd Valve)

#### Standard Inclusions

Hydraulic Quick Hitch, Fork Frame with Tynes and Heavy Duty Bucket (with Bolt On Cutting Edge)

#### Additional Buckets Available:

4-in-1, Sieve, Grain (4.0m<sup>3</sup>), Rock, Light Materials, etc...(all P.O.A.)

#### Additional Attachments Available:

Log Grapples, Hay & Bale Forks, Hydro Post Hole Diggers, Weighing Systems, etc... (all POA)

### DIMENSIONS

|                                       |                    |
|---------------------------------------|--------------------|
| A Bucket on ground machine length     | 7950mm             |
| B Tyre width                          | 2260mm             |
| C Machine height                      | 3260mm             |
| D Bucket Width (GP bucket)            | 2510mm             |
| E Bucket tilt forward at full height  | 3500mm             |
| F Bucket tilt backward at full height | 5200mm             |
| G Load frame lower pin at full height | 4340mm             |
| H Centre to rear axel                 | 1700mm             |
| I Centre to front axel                | 1220mm             |
| J Centre to load frame                | 3600mm             |
| K Centre to rear                      | 3500mm             |
| L Under belly height                  | 340mm              |
| M Front wheel to bucket edge          | 2570mm             |
| Bucket Capacity (GP bucket Approx.)   | 1.8 m <sup>3</sup> |
| Operating Weight / Safe Work Load     | 12T/3.2T           |
| Tyre Specification                    | 17.5-R25           |
| Bucket edge                           | 2510 x 260 x 20    |

### ENGINE

|                   |  |
|-------------------|--|
| Model             | Cummins 6BTA5.9-C150-II                                      |
| Type              | Turbo charged, 6 Cylinder in-line, direct injection 4 stroke |
| Rated Power       | 150HP  |
| Rated RPM         | 2,400rpm   |
| Displacement      | 5.9L   |
| Fuel Consumption. | 235g / kw.h  |
| Max. Torque       | 580Nm  |

### TRANSMISSION

|                   |                            |
|-------------------|----------------------------|
| Type              | Planetary Powershift       |
| Transmission Pump | Gear driven hydraulic pump |
| Working Pressure  | 160-218 Psi                |
| Speed/Shift       | 2 Speed/fwd 34km/h         |

### STEERING

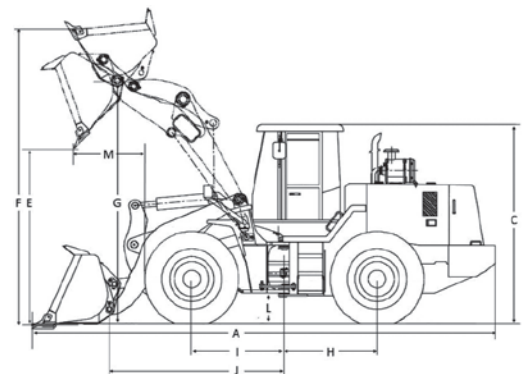
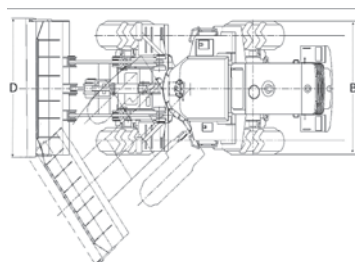
|                   |                                     |
|-------------------|-------------------------------------|
| Type              | Full-hydraulic articulated steering |
| Steering Orbitrol | HMU Eaton                           |
| Steering Angle    | 38°                                 |
| Working Pressure  | 2030Psi                             |

### SERVICE REFILL CAPACITIES

|               |      |              |     |
|---------------|------|--------------|-----|
| Fuel          | 140L | Engine Oil   | 17L |
| Hydraulic Oil | 130L | Transmission | 40L |

### HYDRAULICS

|                       |                                      |
|-----------------------|--------------------------------------|
| Type                  | Single lever hydraulic pilot control |
| Pump                  | Gear driven Hydraulic Pump           |
| Flow Rate             | 160L/min                             |
| Working Pressure      | 2329 Psi                             |
| Lifting Time          | 5.3 seconds                          |
| Lowering Time (empty) | 2.9 seconds                          |
| Dumping Time (empty)  | 1.0 seconds                          |



### PURCHASE PRICE



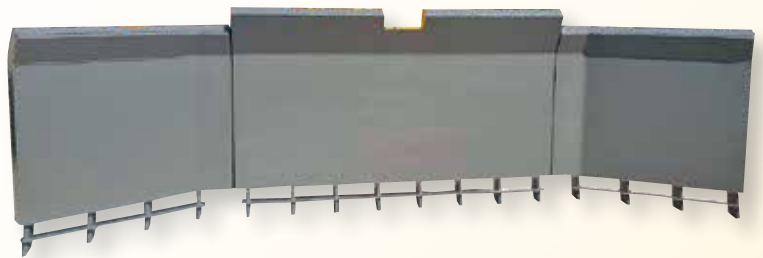
#### ACTIVE MACHINERY

28-30 Hydrive Close  
Dandenong South Victoria 3175  
Phone 03 9799 7707  
Mobile 0409 307 500  
Email sales@activemachinery.com.au

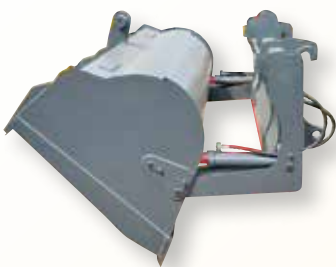
# ATTACHMENTS



THREE METER / TEN FOOT STICK RAKE



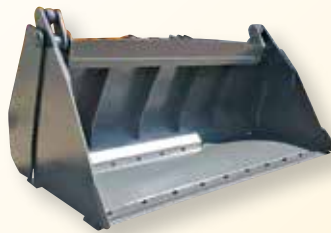
FIVE METER / SIXTEEN FOOT STICK RAKE



HIGH DUMP BUCKET



HAY FORKS



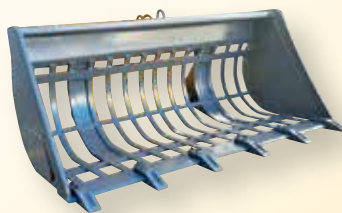
4 IN 1 BUCKET



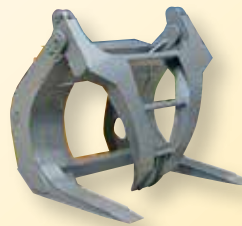
LIGHT MATERIALS BUCKET



REAR RIPPERS



SIEVE BUCKET



LOG GRAPPLE  
(SINGLE FINGER)



LOG GRAPPLE  
(TWIN FINGER)

**WHEN POWER & PERFORMANCE MATTERS**

**CHOOSE ACTIVE**



**ACTIVE MACHINERY**  
28-30 Hydrive Close  
Dandenong South Victoria 3175  
Phone 03 9799 7707  
Mobile 0409 307 500  
Email [sales@activemachinery.com.au](mailto:sales@activemachinery.com.au)