



WHEN POWER & PERFORMANCE MATTERS

CHOOSE ACTIVE

AL910C

4 TONNE WHEEL LOADER

FEATURES

- ◆ 4 Speed Transmission
- ◆ Intergrated Air Conditioned & Heated Cabin
- ◆ Suspension Seat
- ◆ Single Lever Hydralic Pilot Control
- ◆ Full Power Third Function Hydraulics (3rd Valve)
- ◆ Standard Inclusion:
Hydraulic Quick Hitch, Fork Frame with Tynes, Bucket (with bolt on Cutting Edge) and 4 in 1 Bucket
- ◆ Additional Buckets and Attachments Available:
Scales (Weighing System) & Printer, Hay Forks Etc...

DIMENSIONS

A: Length (Bucket on ground)	5050mm
B: Width (Outside tyres)	1840mm
C: Height	2770mm
D: Bucket width	1800mm
E: Max Dump Height	2890mm
F: Max Dump Height (Bucket Rolled Forward)	
F: Max Dump Height (Bucket Rolled Back)	4280mm
G: Max Height to Centre Pivot Pin (full lift)	3630mm
H: Centre to Centre Rear Axle	1345mm
I: Centre to Centre Front Axle	940mm
J: Centre to Load frame	1980mm
L: Underbelly Clearance	225mm
M: Front Wheel to Bucket Edge	1200mm
Breakout Force	>48kn
Operating Weight/Safe Work Load	4.0/1.5 T
Bucket Capacity	0.75m ³
Tyre Specification	20.5/70-16

HYDRAULICS

Type	Single Lever Hydralic Pilot Control
Pump	Gear Driven Hydraulic Pump
Flow Rate	70L
Working Pressure	14Mpa
Lifting Cycle Time	6 Seconds

ENGINE

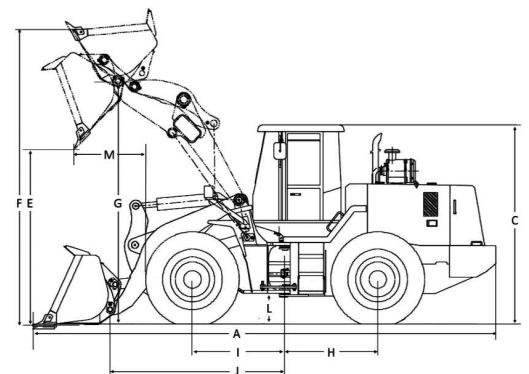
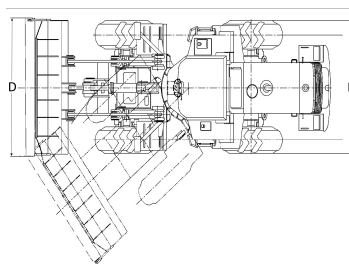
Model	Yunnei 490 Turbo Engine
Type	4 Cylinder in-line Direct injection
Rated Power	55Kw (75HP)
Rated RPM	2400
Displacacment	2.50L
Min. Fuel Consumption	5.0L/HR
Max. Torque	237 NM

TRANSMISSION

Type	Planetary Powershift
Transmission Pump	Gear Driven Hydraulic Pump
Working Pressure	1.5Mpa
Speed/Shift	4 Forward/4 Reverse Max 30 KM/H

STEERING...

Type	Full- Hydraulic Articulated Steering
Steering Orbitrol	BZZ5-250C
Steering Angle	20°
Working Pressure	10Mpa



PURCHASE PRICE



ACTIVE MACHINERY
28-30 Hydrive Close
Dandenong South Victoria 3175
Phone 03 9799 7707
Mobile 0409 307 500
Email sales@activemachinery.com.au

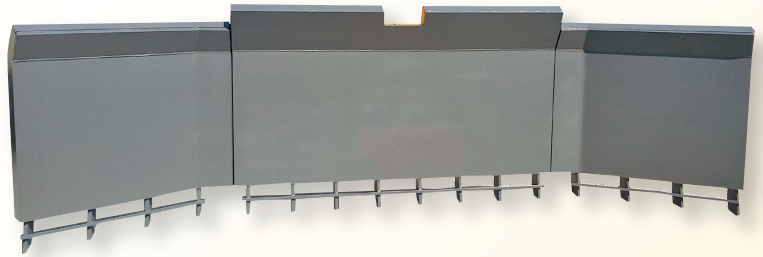
www.activemachinery.com.au

Attachments Not Included. Due to continued advancements in technology, Active Machinery are constantly improving their quality range. Therefore the information and pictures shown should be used as a guide only.

ATTACHMENTS



THREE METER / TEN FOOT STICK RAKE



FIVE METER / SIXTEEN FOOT STICK RAKE



HIGH DUMP BUCKET



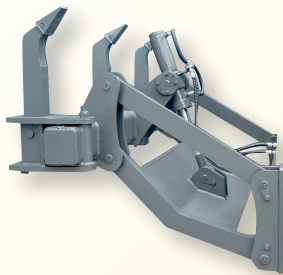
HAY FORKS



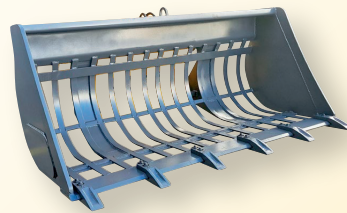
4 IN 1 BUCKET



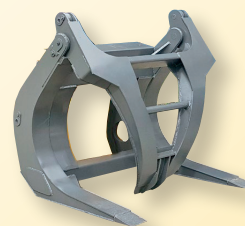
LIGHT MATERIALS BUCKET



REAR RIPPERS



SIEVE BUCKET



LOG GRAPPLE
(SINGLE FINGER)



LOG GRAPPLE
(TWIN FINGER)

WHEN POWER & PERFORMANCE MATTERS

CHOOSE ACTIVE



ACTIVE MACHINERY
28-30 Hydrive Close
Dandenong South Victoria 3175
Phone 03 9799 7707
Mobile 0409 307 500
Email sales@activemachinery.com.au